



DIGITALIZATION IN THE DENTISTRY SECTOR – SURE, BUT SECURE!
Opportunities with the electronic health card and the telematics infrastructure

European Trade Press Conference IDS Cologne, Jan. 23, 2019



ERLEBEN, WAS VERBINDET.

A person wearing a white long-sleeved sweater is shown from the chest up. They are holding a white rectangular device in their left hand and plugging a grey cable into a port on the side of the device with their right hand. The background is a plain, light-colored wall.

WELCOME!

FRANK A. SCHLOßE

SALES EXECUTIVE TELEKOM HEALTHCARE

OVERWHELMING SUPPORT FOR DIGITALIZATION!

CED

"Resolution for sharing data in e-health:
Workflow, prescription, and protection"

November 16, 2018

SHI Modernization Act

Introduction of the electronic health card pursuant to section 291a Social Security Code V (SGB V)

November 13, 2003

KZBV, KBV & ABDA

LETTER OF INTENT
to develop and implement a common digital agenda

January 2018

BMG

"Nursing Staff Reinforcement Act (PpSG)"

Since January 2, 2019

BMG draft bill

TSVG - Appointment Service and Care Act

End of 2018

CED Council of European Dentists
KZBV Federal Association for Statutory Health Insurance Dentists
KBV Federal Association for Statutory Health Insurance Physicians
ABDA Federal Union of German Associations of Pharmacists
BMG Federal Ministry of Health

... and there is agreement that patients must be the focus and that the protection of health data is a top priority!



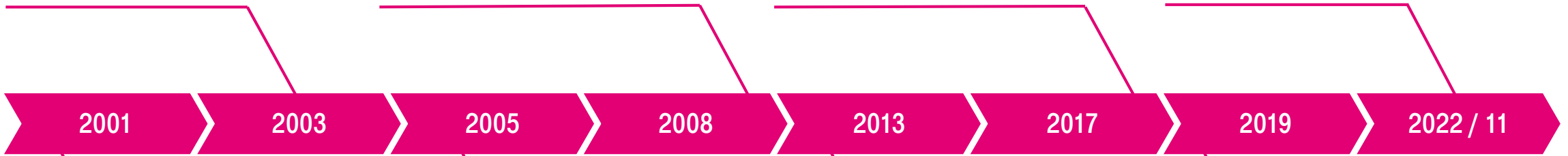
IT TOOK A WHILE, BUT NOW WE'RE GETTING STARTED!

- **Legal definition** to introduce the electronic health card as of October 1, 2006

- **Decision** in favor of nationwide implementation of the **telematics infrastructure**

- Launch of online **live operation** by the industry in late November (first provider approved)

- Subsequent procurement: expiration of certificates in the devices



- "Lipobay" scandal: **fatal interactions between medications**

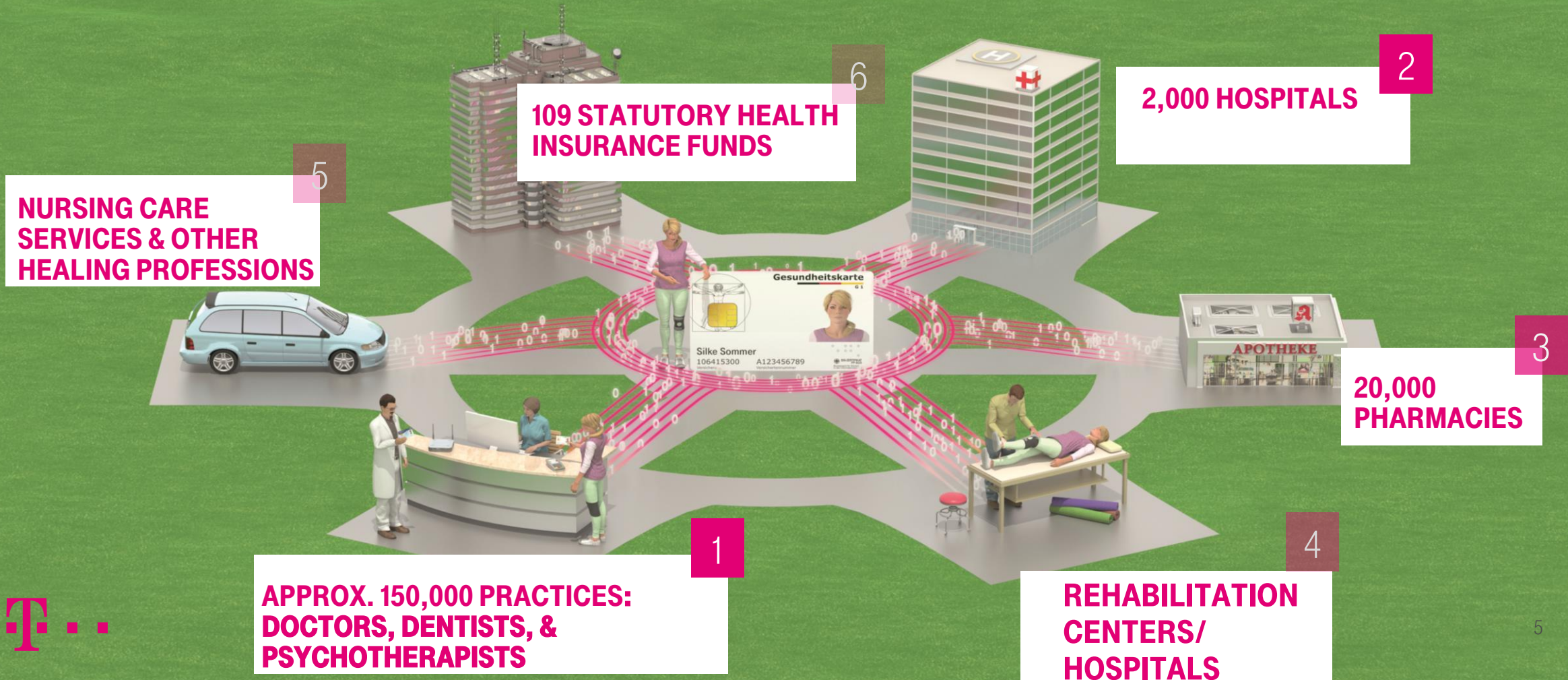
- Founding of **gematik**

- Orders placed with industry to **test** the online rollout (stage 1)

- June 30: all **service providers** are **connected** to the telematics infrastructure
- Sanctions for non-participating service providers



THE GOAL IS A STANDARDIZED, SECURE INFRASTRUCTURE FOR THE ENTIRE HEALTHCARE SECTOR: THE TELEMATICS INFRASTRUCTURE!



THE CONNECTION TO THE FUTURE

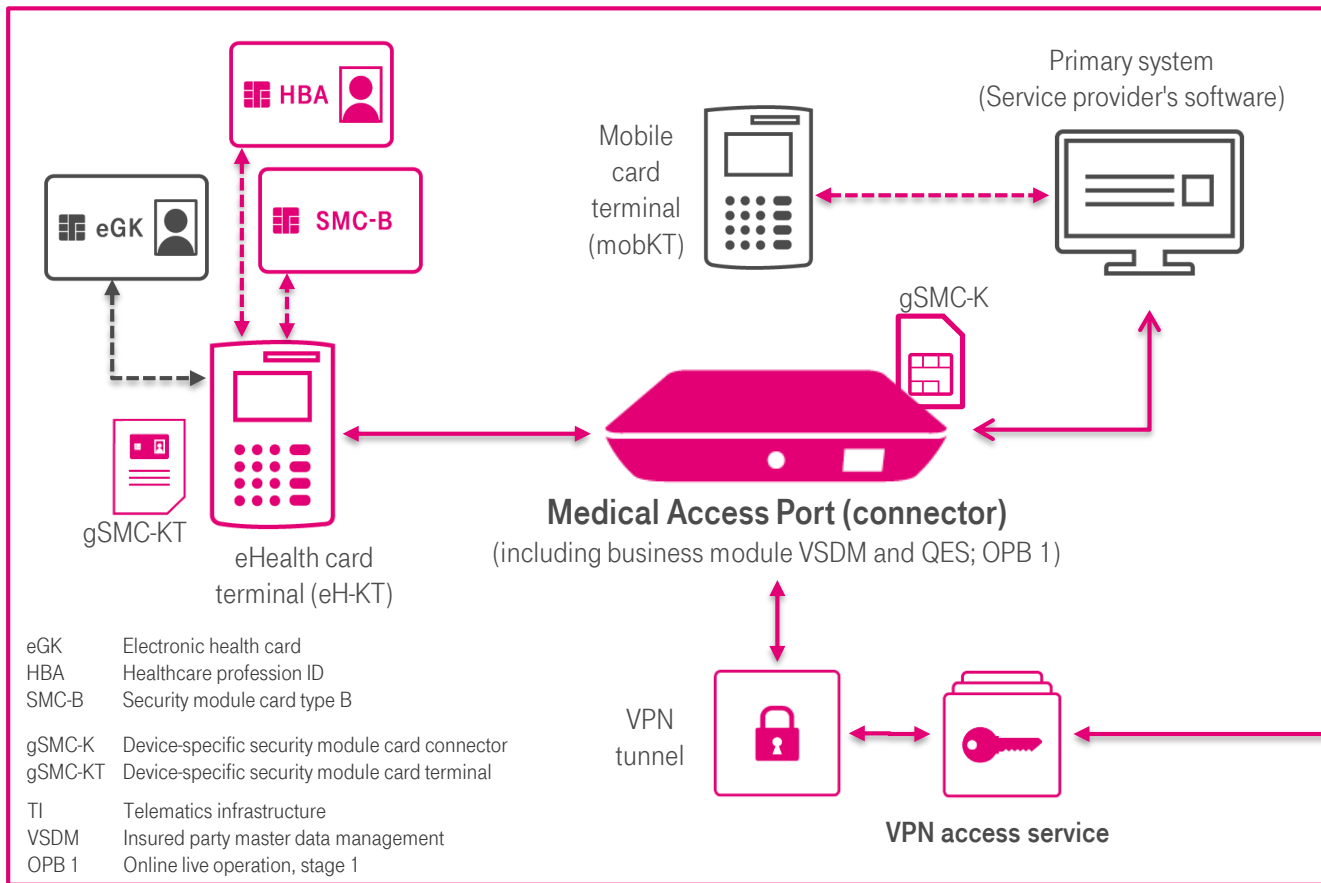
- The connector is the central component for the telematics infrastructure in practice and consists of hardware, including installed Secure Module Card (gSMC-K) and firmware.
- The connector is part of the TI and connects local practice systems with the TI.
- The connector is integrated in the local area network (LAN) and establishes the connection to the TI access network (internet).
- Access to the VPN access service of the TI is necessary to use the online applications of the TI.
- Access to the eHealth card terminal, as well as to the eGK, SMC-B, and eHBA in the local network, is granted exclusively via the connector.

To get started with the future:
THE STARTER PACKAGE

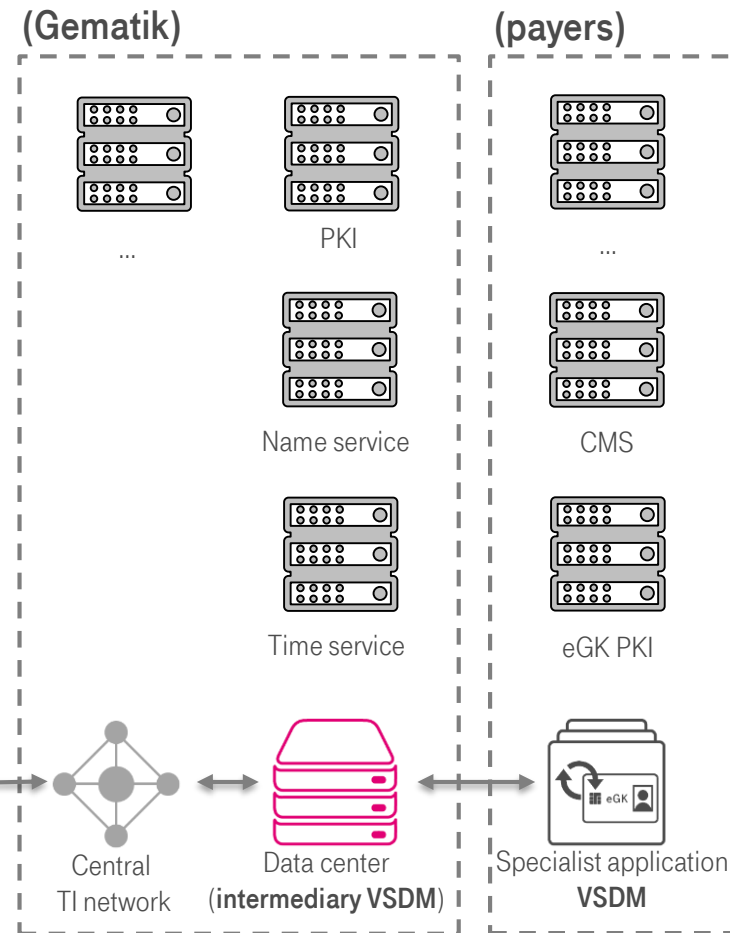


TI OVERVIEW – SECURE INFRASTRUCTURE FOR EXCHANGING & PROCESSING PATIENT DATA

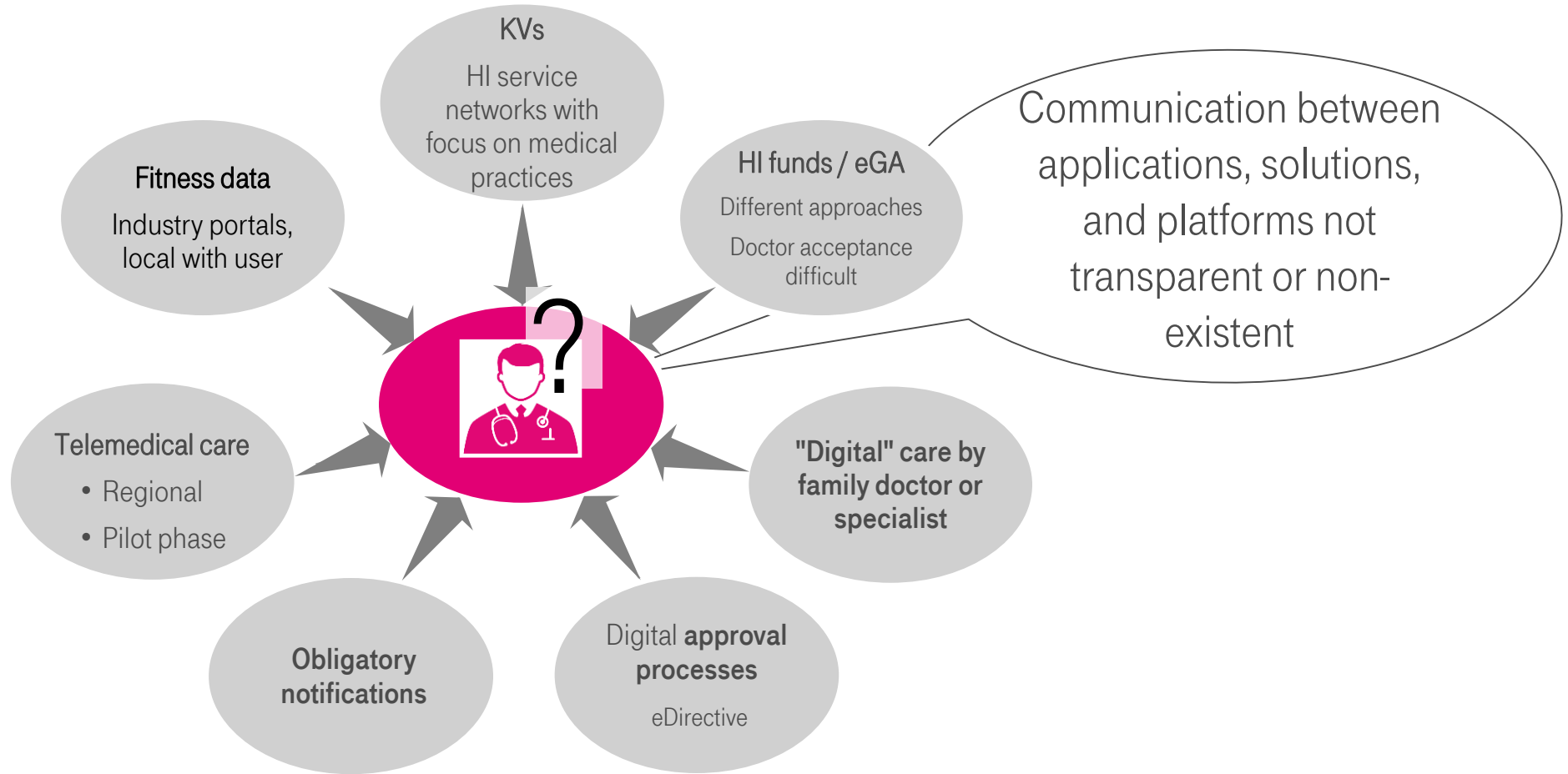
Local components (service provider)



Central components



FROM STANDALONE SOLUTIONS TO STANDARDIZED PLATFORM

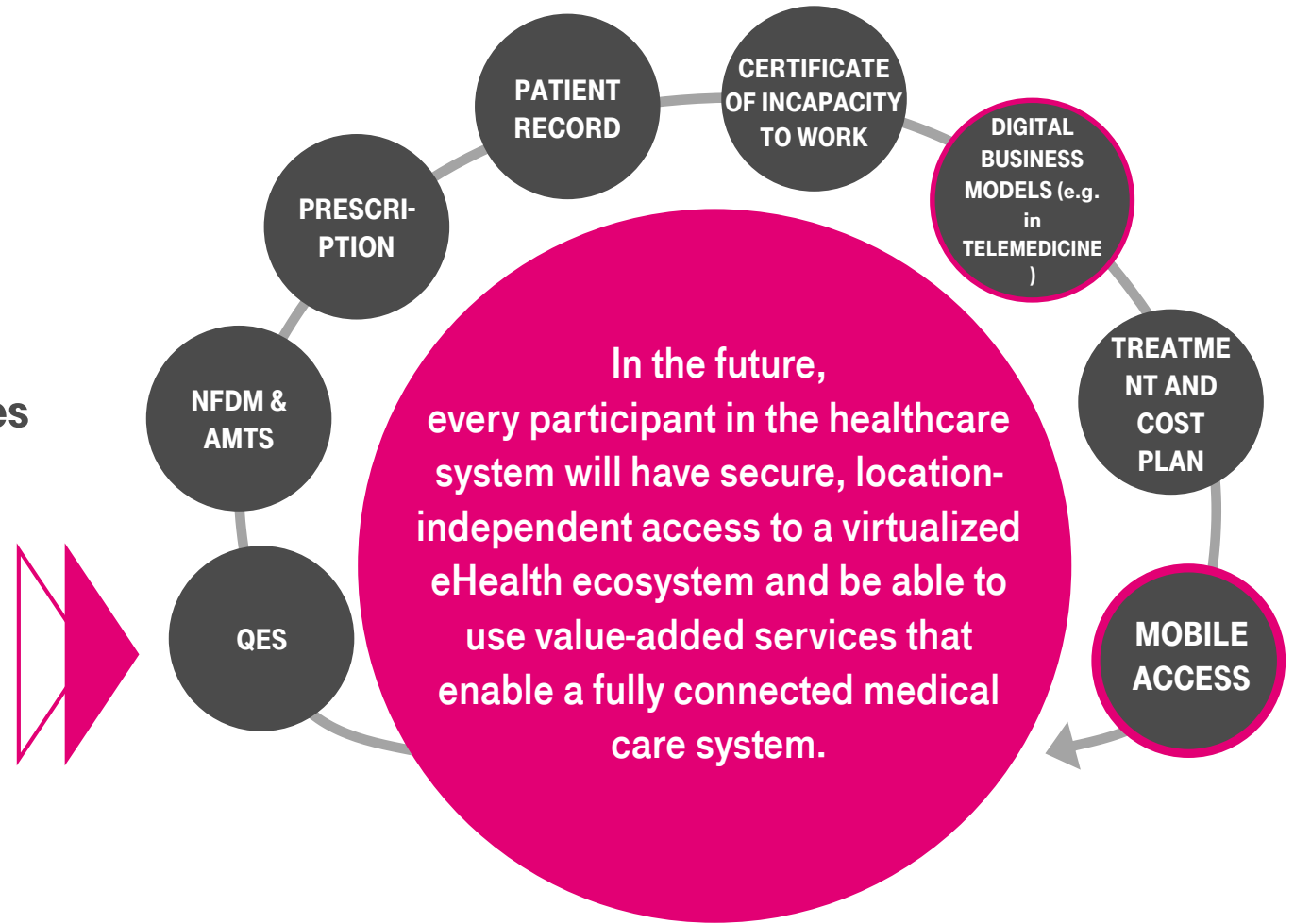


eGA Electronic health record
KVs Associations of Statutory Health
Insurance Physicians



OUTLOOK – VALUE-ADDED SERVICES FOR THE FUTURE

- **Secure access** to the healthcare system telematics infrastructure.
- **Common platform** for value-added services and future applications.
- **As acceptance and participation by the various players grow, so does the potential for new digital business models and methods of care.**



QES Qualified electronic signature
NFDM Emergency data management
AMTS Safety of prescribed medicines



A person wearing a white sweater is plugging a cable into a white laptop. The scene is set against a plain, light-colored background. A semi-transparent pink banner is overlaid on the bottom half of the image, containing text and a logo.

THANK YOU.

WE LOOK FORWARD TO SPEAKING WITH YOU
PERSONALLY.

A white cordless phone with a display screen and a keypad, sitting on a desk. The phone is a DECT 6.0 model by Gigaset, with 'ingolico' and 'DECT 6.0' visible on the base.

ERLEBEN, WAS VERBINDET.